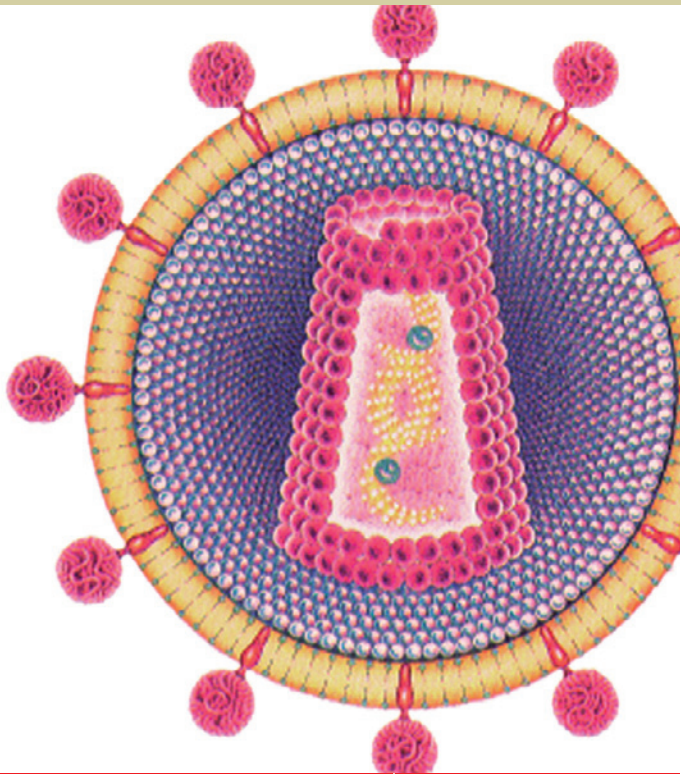




Blood Virus

2008/09 Catalog





Contents

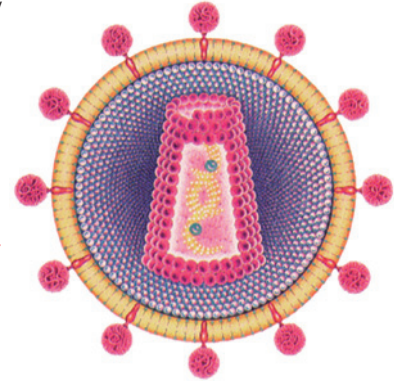
Reagents	4
Retrovirus/HIV	4
Hepatitis A	9
Hepatitis B	10
Hepatitis C	12
Hepatitis D	14
Other Infectious Disease	15
EIA Microplate Analysis System	18
Instrumentation	20
EVOLIS™ Family Systems	20
EVOLIS™ System	21
EVOLIS™ <i>Twin Plus</i> System	22
Metrology Tools	23
Elite™ System	24
Microplate Reader	25
Washer	26
Incubator	27
Automated Strip Processor	27



Reagents

Since 1999, Bio-Rad, through the Pasteur Sanofi Diagnostics acquisition, has consolidated its expertise in AIDS diagnostics. With more than one new HIV test launched each year, Bio-Rad's range of HIV products now covers all known transfusion and diagnostic testing needs—including screening assays, regularly updated for improved sensitivity and reliability rapid unitary tests, supplemental and confirmatory tests.

All markers required for the diagnosis of Hepatitis A, B, C and D are also available from Bio-Rad, as are blood screening and diagnostic kits, such as those for syphilis. Bio-Rad's expertise in immunology, linked to continually updated reagents and automated testing platforms, makes it an outstanding partner for the laboratory's blood testing needs.

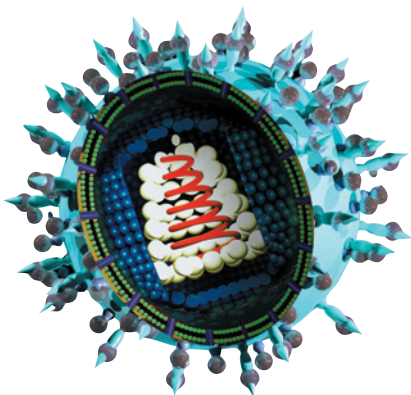


*Human
Immunodeficiency
Virus Type 1
(HIV-1)*

Retrovirus/HIV

HIV, the agent of the acquired immunodeficiency syndrome (AIDS), was first identified by Luc Montagnier in 1983 at the Pasteur Institute of Paris, France. A second type of HIV (HIV-2) was isolated in 1986 from individuals in West Africa. Infection with HIV induces the body to produce antibodies against viral proteins from different parts of the HIV genome, ENV, GAG and POL. Diagnosis of anti-HIV seropositivity is based on the detection of these specific antibodies. HIV antigen is produced during the viral replication phase and generally appears some days after exposure then decreases quickly as antibodies are being produced. Years later, antigenemia may again increase, and is indicative of intense viral replication. Kits to detect markers of HIV infection have been available since 1985. Bio-Rad's latest generation of HIV kits simultaneously detect the presence of HIV antibodies and antigens.

Bio-Rad provides a wide choice of reagents and testing formats, including microplates using EIA and agglutination methods, rapid tests, microparticle chemiluminescence and immunoblots. These tests can be performed using manual or automated methods.



Microplate Format

Genscreen™ ULTRA HIV Ag-Ab Assay

Genscreen™ ULTRA HIV Ag-Ab is a screening kit for the detection of HIV-1 p24 antigen and antibodies to HIV-1 (groups M and O) and HIV-2 in human serum or plasma by enzyme immunoassay. This kit can be used for HIV Ab screening, HIV Ag screening and HIV Ag+Ab screening: "three tests in one".

Ordering Information

72386	Genscreen™ ULTRA HIV Ag-Ab.....	96 tests
72388	Genscreen™ ULTRA HIV Ag-Ab.....	480 tests

Genscreen™ HIV-1/2 Version 2 Assay

Genscreen™ HIV-1/2 Version 2 is a screening kit for the detection of antibodies to HIV-1 and HIV-2 in serum or plasma by enzyme immunoassay.

Ordering Information

72278	Genscreen™ HIV-1/2 Version 2	96 tests
72279	Genscreen™ HIV-1/2 Version 2	480 tests

SFD HIV-1/2 PA Assay

SFD HIV-1/2 PA is a passive particle agglutination test for the detection of antibodies to HIV-1 and HIV-2 in human serum or plasma. Microplates with U-bottom wells are provided separately from the SFD HIV-1/2 PA kits.

Ordering Information

71110	SFD HIV-1/2 PA	5 x 20 tests
83378	U-Bottom Well Microplates.....	5 microplates

GENETIC SYSTEMS™ HIV-1 Ag EIA Assay

GENETIC SYSTEMS™ HIV-1 Ag EIA is an enzyme Immunoassay (EIA) for detection of human immunodeficiency virus Type 1 (HIV-1) p24 antigen in human serum, plasma and cell culture supernatant.

Ordering Information

71120	GENETIC SYSTEMS™ HIV-1 Ag EIA.....	192 tests
-------	------------------------------------	-----------

GENETIC SYSTEMS™ HIV-1 Ag Confirmatory Assay

GENETIC SYSTEMS™ HIV-1 Ag Confirmatory is an assay for confirmatory neutralization of GENETIC SYSTEMS™ HIV-1 Ag EIA repeatedly reactive specimens.

Ordering Information

71121	GENETIC SYSTEMS™ HIV-1 Ag Confirmatory	25 tests
-------	--	----------

HIV-1 ANTIGEN STANDARD Assay

HIV-1 ANTIGEN STANDARD (BRU strain) is intended for preparing calibration curves to quantify HIV-1 antigen positive reactions with EIA kits.

Ordering Information

72217 HIV-1 ANTIGEN STANDARD1 vial

ELAVIA™ Ac-Ab-Ak I Assay

ELAVIA™ Ac-Ab-Ak I is a complementary analysis for HIV-1 antibodies in human serum or plasma by enzyme immunoassay.

Ordering Information

72263 ELAVIA™ Ac-Ab-Ak I.....96 tests

ELAVIA™ Ac-Ab-Ak II Assay

ELAVIA™ Ac-Ab-Ak II is a complementary analysis for HIV-2 antibodies in human serum or plasma by enzyme immunoassay.

Ordering Information

72225 ELAVIA™ Ac-Ab-Ak II.....96 tests

Washing Solution R2 (20X)

Ordering Information

72700 Washing Solution R2 (20X)235 ml

Immunoblots

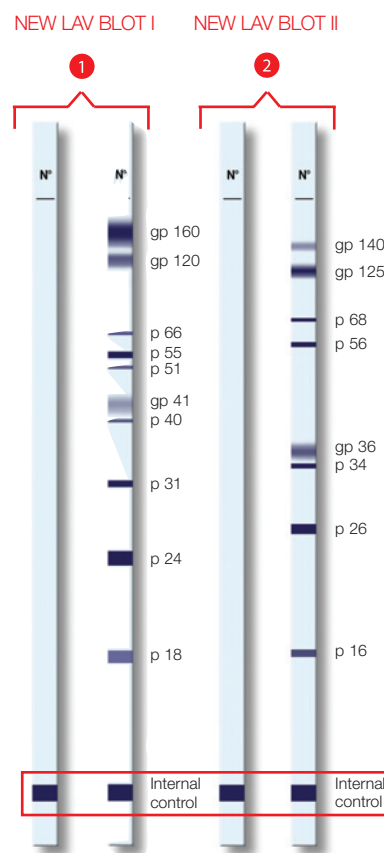
NEW LAV BLOT I Assay, NEW LAV BLOT II Assay and Western Blot Assay

Built from the historical expertise of Bio-Rad, NEW LAV BLOT I and NEW LAV BLOT II are the “Gold Standard” assays to confirm seropositive anti-HIV-I and anti-HIV-II responses in serum and plasma and to identify possible non-specific reactions by immunoblotting (Western Blot).

- A complete confirmation range for HIV-1 and HIV-2
 - Procedure validated by the internal control band (anti-IgG)
 - Fast and reliable results
 - Manual or automated processing on Bio-Rad systems
- For more details refer to the instrumentation section

Ordering Information

72251	NEW LAV BLOT I	18 tests
72252	NEW LAV BLOT II	18 tests
72270	Western Blot Substrate	40 ml
72510	Wash Solution/Diluent, NEW LAV BLOT I and II.....	100 ml
72256	Rack, Western Blot	10 units



NEW LAV BLOT I and NEW LAV BLOT II with internal control band

PEPTI-LAV 1-2 Assay

PEPTI-LAV 1-2 is a complementary test for differentiation of HIV-1 and HIV-2 antibodies that have been detected with a primary screening test (for example, PEPTI-LAV 1-2 can be used for Western Blot orientation). This test can be performed manually or automated on Bio-Rad systems. For more details, refer to the instrumentation section.

Ordering Information

72253	PEPTI-LAV 1-2	10 tests
-------	---------------------	----------



*Genie II
HIV-1/HIV-2 device*

Rapid Tests

Genie II HIV-1/HIV-2 Assay

Genie II HIV-1/HIV-2 is a rapid EIA test for specific detection and differentiation of anti-HIV-1 and anti-HIV-2 antibodies in human serum or plasma. It uses an antigen sandwich format with specific recombinant and peptide antigens.

Ordering Information*

72323	Genie II HIV-1/HIV-2.....	40 tests
-------	---------------------------	----------

* Not CE Marked

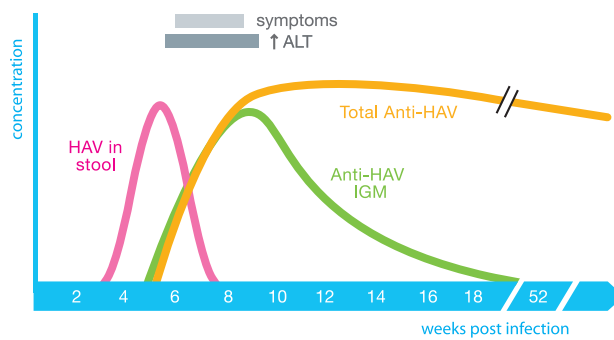
Hepatitis A

Hepatitis A is endemic throughout the world, occurring most commonly in areas of poor hygiene and low socioeconomic conditions. The virus, which is transmitted primarily by the fecal-oral route, is spread by person-to-person contact and food and water-borne epidemics. The agent causing Hepatitis A is an RNA virus classified among the Picornaviridae family. Viral spread by parenteral contact is possible but rare, because infected individuals are viremic for a short period of time (usually less than three weeks).

Tests for total anti-HAV antibodies do not discriminate among different antibody classes. Although the presence of total anti-HAV is a sign of exposure to HAV virus, it does not distinguish between present and past infection and is therefore useful primarily for epidemiological purposes.

The recent availability of anti-HAV vaccines has required the development of more sensitive assays in order to screen non-vaccinated individuals, to follow up the antibody response after vaccination, and to estimate the need and timing of booster vaccinations.

Specific IgM antibodies to HAV (IgM anti-HAV) appear a few days after infection, reach a peak rapidly and persist at elevated levels in the bloodstream for about two months, before declining during late convalescence.



*Hepatitis A Serological Profile:
Example of acute Hepatitis*

Microplate Format

Total Ab Anti-HAV Assay

HAV Total Assay is an enzyme immunoassay for qualitative and quantitative determination of total antibodies to Hepatitis A virus in serum or plasma.

Anti-HAV IgM Assay

HAV IgM Assay is an IgM antibody-capture enzyme immunoassay for qualitative determination of IgM antibodies to Hepatitis A virus in serum or plasma.

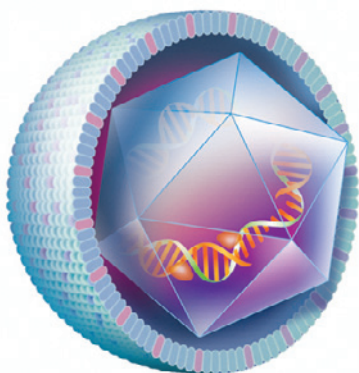
Ordering Information

72481	Monalisa™ Total Anti-HAV PLUS.....	192 tests
72491	Monalisa™ HAV IgM PLUS	192 tests

Washing Solution R2 (20X)

Ordering Information

72700	Washing Solution R2 (20X)	235 ml
-------	---------------------------------	--------



Hepatitis B

HBV infection is prevalent in all parts of the world, with the highest incidence in South-east Asia and Africa. Acute HBV infection is fully resolved in 90% to 95% of infected adults, who remain immune for their lifetime. It is estimated that more than 400 million people in the world are chronic carriers. HBV carriers are at risk for developing chronic liver disease, including hepatocellular carcinoma.

HBV is transmitted parenterally via contaminated needles or shared household devices, sexual contact, or from carrier mother to her neonate. The Hepatitis B virus (HBV) is classified among the hepadnaviruses, and is a DNA virus. The envelope containing the surface protein of HBV (HBs Ag) surrounds the virus capsid, a protein consisting of the Hepatitis B core Ag (HBc Ag). HBe Ag is generated during virus replication without becoming incorporated into the virus particle.

Microplate Format

Monolisa™ HBs Ag ULTRA Assay

Monolisa™ HBs Ag ULTRA is a one-step enzyme immunoassay for the detection of the surface antigen of the Hepatitis B virus (HBs Ag) in human serum or plasma.

Ordering Information

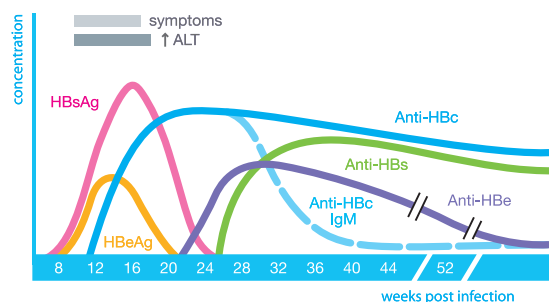
72346	Monolisa™ HBs Ag ULTRA	96 tests
72348	Monolisa™ HBs Ag ULTRA	480 tests

Monolisa™ HBs Ag ULTRA Confirmatory Assay

The Monolisa™ HBs Ag Confirmatory test uses the principle of neutralization to determine the specificity of an HBs Ag EIA reactive result. This is accomplished using an excess of antibodies to HBs Ag (anti-HBs serum: the neutralization reagent).

Ordering Information

72408	Monolisa™ HBs Ag ULTRA Confirmatory	25 tests
-------	--	----------



*Serological Profile Example:
Acute Hepatitis*

Washing Solution R2 (20X)

Ordering Information

72700	Washing Solution R2 (20X)	235 ml
-------	---------------------------------	--------

Monolisa™ Anti-HBs PLUS Assay

Monolisa™ Anti-HBs PLUS is an enzyme immunoassay for qualitative and quantitative determination of antibodies to Hepatitis B surface antigen in human serum or plasma.

Ordering Information

72566 Monolisa™ Anti-HBs PLUS192 tests



Monolisa™ Anti-HBc PLUS Assay

A new Level of Effectiveness and Safety

Monolisa™ Anti-HBc PLUS is an enzyme immunoassay for qualitative determination of total antibodies to nucleocapsid antigen (core) of the Hepatitis B virus in human serum or plasma.

Ordering Information

72315 Monolisa™ Anti-HBc PLUS96 tests
72316 Monolisa™ Anti-HBc PLUS480 tests

Monolisa™ HBc IgM PLUS Assay

Monolisa™ HBc IgM PLUS is an enzyme immunoassay for qualitative determination of the IgM antibodies to the core antigen of the Hepatitis B virus in human serum or plasma.

Ordering Information

72382 Monolisa™ HBc IgM PLUS.....96 tests

Monolisa™ HBe Ag-Ab PLUS Assay

Monolisa™ HBe Ag-Ab PLUS is an enzyme immunoassay for the qualitative determination of HBe antigen (HBe Ag) and/or antibody to HBe antigen (Anti-HBe) in human serum or plasma.

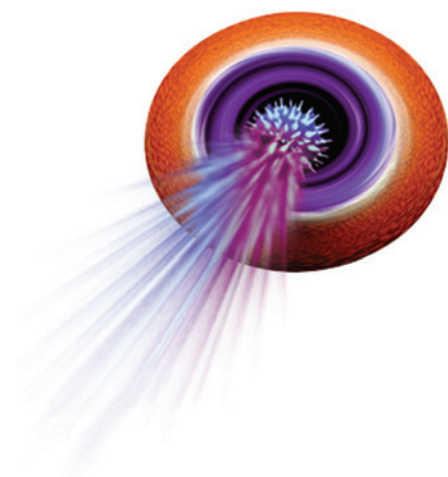
Ordering Information

72396 Monolisa™ HBe Ag-Ab PLUS.....96 tests HBe Ag + 96 tests HBe Ab

Washing Solution R2 (20X)

Ordering Information

72700 Washing Solution R2 (20X)235 ml



Hepatitis C

The agent causing Hepatitis C is the Hepatitis C virus (HCV), which belongs to the Flaviviridae family of viruses. HCV has an outer lipoprotein envelope surrounding an icosahedral capsid with a diameter of 60 nm. The viral genome is composed of positive single-stranded RNA.

Like HBV, HCV is transmitted primarily through parenteral routes. HCV is found worldwide, with prevalence rates varying from less than 0.2% to up to 15%. It is estimated that more than 180 million people worldwide are infected, with the vast majority (80% to 95%) developing persistent infection. Severe liver disease (cirrhosis and hepatocellular carcinoma) appears to develop after 20-25 years in approximately 10% to 20% of individuals with persistent infection.

Microplate Format

Monolisa™ HCV Ag-Ab ULTRA Assay

Monolisa™ HCV Ag-Ab ULTRA is an enzyme ImmunoAssay (EIA) kit for qualitative determination of HCV capsid antigen and antibodies to HCV in human serum or plasma.

Ordering Information

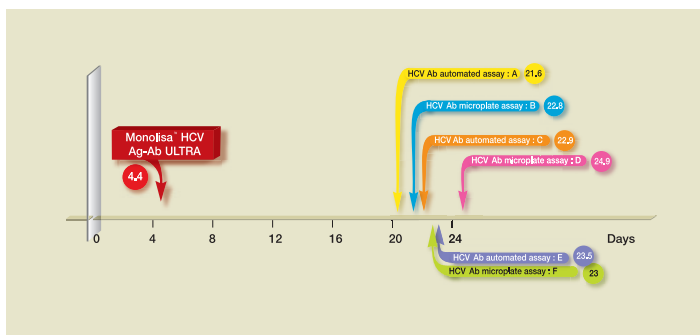
72556	Monolisa™ HCV Ag-Ab ULTRA	96 tests
72558	Monolisa™ HCV Ag-Ab ULTRA	480 tests

Bio-Rad has chosen the best epitope targets with high amino acid homology between genotypes to maximize sensitivity without decreasing specificity.

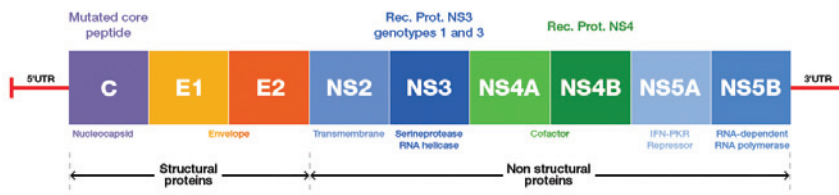
The recombinant proteins used were developed by research teams at Bio-Rad and have undergone specific chemical treatment to create a spatial conformation (refolding) for better detection of associated antibodies.

These proteins are produced for the Monolisa™ Anti-HCV ULTRA Test Kit at Bio-Rad facilities.

Window Period Reduction after HCV infection. Ranking on 35 Seroconversions in Days of Delay vs. Nucleic Acid Testing.



HCV Genomic Organization and Proteins



Monolisa™ Anti-HCV PLUS Version 2 Assay

Monolisa™ Anti-HCV PLUS Version 2 is an enzyme immunoassay for qualitative determination of antibodies to HCV (Hepatitis C virus) in human serum or plasma.

Ordering Information

72317	Monolisa™ Anti-HCV PLUS Version 2	96 tests
72318	Monolisa™ Anti-HCV PLUS Version 2	480 tests

Washing Solution R2 (20X)

Ordering Information

72700	Washing Solution R2 (20X)	235 ml
-------	---------------------------------	--------

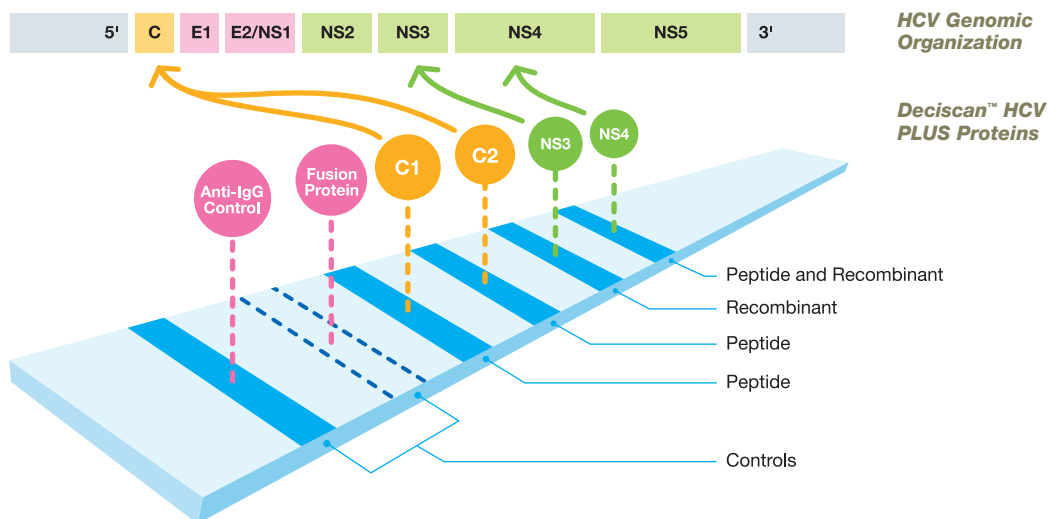
Immunoblot

Deciscan™ HCV PLUS Assay

Deciscan™ HCV PLUS is an Immunoblot test using specific recombinant and peptide antigens (Core, NS3, NS4) and two control bands to validate EIA seropositivity and identify specific HCV antibodies in human serum or plasma.

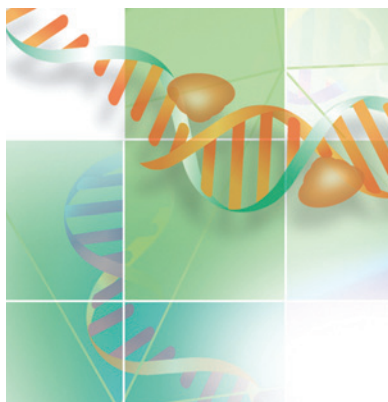
- Process validation using two internal control bands
- Fast, reliable results with well-selected antigens
- Easy-to-use, adaptable in all types of laboratories
- Manual or automated processing on Bio-Rad systems

For more details refer to the instrumentation section



Ordering Information

72310	Deciscan™ HCV PLUS.....	24 tests
-------	-------------------------	----------



Hepatitis D

Hepatitis D or delta hepatitis is caused by the hepatitis delta virus (HDV), a defective RNA virus.

The hepatitis delta virus is present worldwide and in all age groups. Its distribution parallels that of HBV infection, although with different prevalence rates.

The hepatitis D virus (HDV) is a 36 nm diameter defective virus, which requires the helper functions of hepatitis B virus (HBV) for successful replication. The HDV nucleocapsid is formed of a single-stranded genome (HDV-RNA), which is strictly associated to two specific proteins giving rise to the Delta antigen (HDV Ag), and is surrounded by an HBs Ag envelope. Consequently, detection of HDV Ag requires treatment of test samples with detergents to remove HBs Ag and expose HDV Ag antigenic determinants.

Microplate Format

ETI-DELTAK-2 (HDV Ag) Assay

ETI-DELTAK-2 is a non-competitive sandwich assay for qualitative determination of HDV Ag in serum or plasma, based on the ELISA technique.

Ordering Information

56439 ETI-DELTAK-2*96 tests

ETI-DELTA-IGMK-2 (HDV IgM) Assay

ETI-DELTA-IGMK-2 is an immunocapture assay for qualitative determination of IgM anti-HDV in serum or plasma, based on the ELISA technique.

Ordering Information

56440 ETI-DELTA-IGMK-2*96 tests

ETI-AB-DELTAK-2 (HDV TOTAL) Assay

ETI-AB-DELTAK-2 is a simultaneous competitive assay for qualitative determination of anti-HDV in serum or plasma, based on the ELISA technique.

Ordering Information

56438 ETI-AB-DELTAK-2*96 tests

* Ask for availability in your country.



Other Infectious Disease

Syphilis

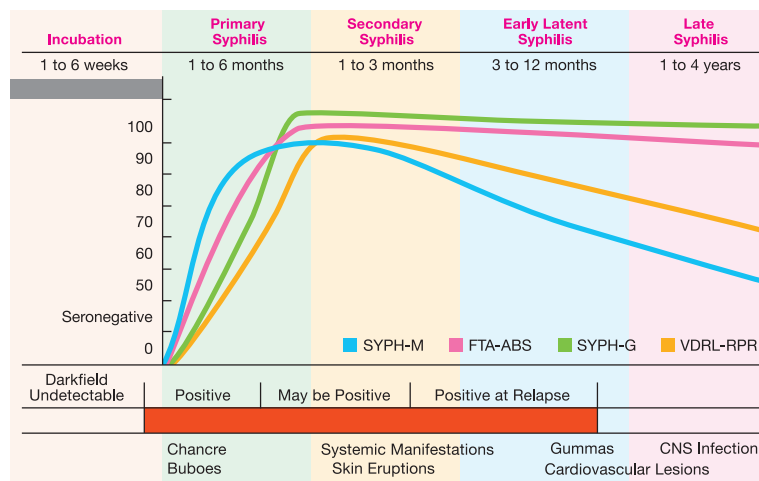
Syphilis

Syphilis is caused by the spirochete *Treponema pallidum*. The disease progresses through distinct disease stages—primary, secondary, latent, and tertiary (late). These stages are associated with distinct clinical signs and symptoms. The first sign of primary infection is an ulcer (chancre), which generally appears 3 to 6 weeks after infection. If left untreated, approximately one-third of infected individuals will develop chronic disease. Secondary syphilis is characterized by a rash that appears over all or parts of the body. The infection may then go into a latent phase during which the disease is not contagious. However, about one-third of individuals with secondary syphilis develop complications of late (tertiary) syphilis, which can include blindness, other neurological problems, including neurosyphilis, and heart problems. Syphilis is almost always acquired by sexual contact, although it can also be transmitted by transfusion of infected blood.

Tests for syphilis fall into four categories: direct microscopic examination, direct antigen tests, treponemal antibody tests, and non-treponemal antibody tests. Because of the long periods of dormancy and the non-specific nature of non-treponemal tests, methods which detect specific anti-treponemal antibodies in patient specimens play a major role in the diagnosis of syphilis. Bio-Rad provides a complete line of products for antibody detection, with a large choice of packaging adapted to laboratory testing volume.

Appearance of Antibody Subtypes at Various Stages of Syphilis

Range of reactivity for each method and the corresponding serologic response in untreated syphilis cases



Agglutination Tests

RPR Products*

RPR (Rapid Plasma Reagin) products use carbon particles coated with cardiolipin antigen to detect reagin antibodies in serum and plasma (performed on tests cards).

Ordering Information

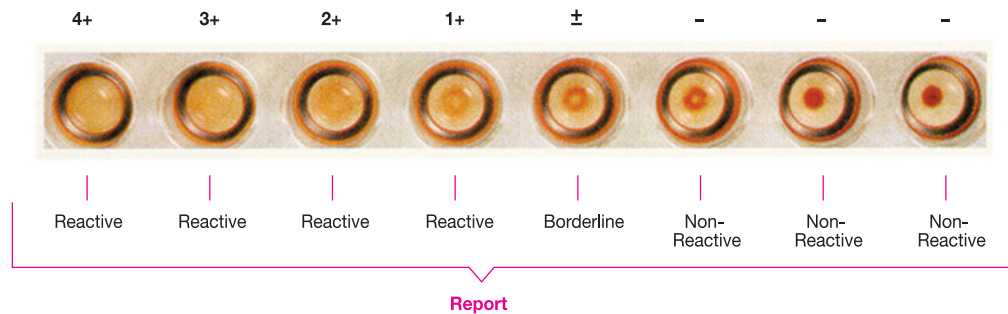
72505	RPR-100*	100 tests
72506	RPR-500*	500 tests

* Ask for availability in your country.

TPHA Products*

Treponema pallidum Haemagglutination Assay (TPHA) will detect specific antibodies to *T. pallidum* in human sera and plasma using microhaemagglutination. It can be performed manually using U-well plates or automated on Olympus systems.

Qualitative Assay: Easy to report results



TPHA Assay
Results in
45 minutes

Ordering Information

72501	TPHA 200*.....	200 tests
72502	TPHA Screening 500*.....	500 tests
83378	U-Bottom Well Microplates.....	5 microplates
72507	TPHA Olympus 2000*.....	2,000 tests

* Ask for availability in your country.

Microplate Format

Syphilis Total Antibody (TA) Microplate EIA Assay

Syphilis Total Antibody (TA) Microplate EIA is an enzyme immunoassay for the qualitative determination of the total antibodies to *T. pallidum* in human serum or plasma.

Ordering Information

72518	Syphilis Total Antibody Microplate (TA) EIA II.....	96 tests
72519	Syphilis Total Antibody Microplate (TA) EIA II.....	480 tests

Syphilis IgM EIA Assay

Syphilis IgM EIA is intended for the detection of IgM specific antibodies to *Treponema pallidum* in human serum or plasma and is used in the differential diagnosis of syphilis infections.

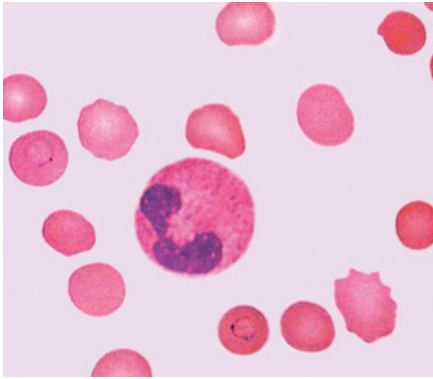
Ordering Information

72250	Syphilis IgM EIA.....	96 tests
-------	-----------------------	----------

Syphilis (TA) EIA Wash Solution (10X)

Ordering Information

72517	Syphilis (TA) EIA Wash Solution (10X).....	125 ml
-------	--	--------



Malaria

Malaria is one of the most common diseases in the world. More than half the world population lives in malaria-infected areas. Over 200 million cases annually result in up to 3 million deaths each year; a majority of which are in young children. In non-endemic areas, it is one of the most important imported diseases, resulting in a number of deaths in late-diagnosed or unsuspected cases each year. The disease is caused by protozoa of the genus *Plasmodium*, transmitted by the bite of the female *Anopheles* mosquito. There are four species

causing human malaria: *P. falciparum*, *P. vivax*, *P. malariae*, and *P. ovale*. The disease may also be transmitted by transfusion of infected blood. Once in the blood the sporozoite makes its way to the liver where for the next 2 weeks merozoites are produced. These are released into the blood where they invade the red cells and produce more merozoites, causing the cells to rupture. It is this rupturing that is responsible for the clinical symptoms.

Of the four species, *P. falciparum* is the most common and the most virulent, causing most malaria-related deaths. *P. vivax* is the next most common cause of malaria. Although rarely fatal, this form of malaria can be accompanied by severe clinical symptoms. It is a common cause of malaria in S.E. Asia and S. America.

Malaria EIA Ab Assay

Malaria EIA is a microplate format for the qualitative and semi-quantitative detection of antibodies to *Plasmodium falciparum*, *P. vivax*, *P. ovale*, *P. malariae* in human serum and plasma by EIA. CE marked.

Ordering Information

72526	Malaria EIA*	96 tests
72528	Malaria EIA*	480 tests

* Ask for availability in your country.

Open EIA Microplate Analysis System

Summary

Bio-Rad provides a comprehensive range of microplate enzyme immunoassay products, including instrumentation, software, reagent kits and accessories. Bio-Rad EIAs are provided as complete kits for maximum convenience and yield reliable results for maximum confidence.

Bio-Rad EIA microplate-based assays can be performed using manual, semi-automated or fully-automated instrument systems.



EVOLIS™ fully automated microplate processor

See page 20 for details

Ordering Information

72386-72388	Genscreen™ ULTRA HIV Ag-Ab.....	96-480 tests
72278-72279	Genscreen™ HIV-1/2 Version 2.....	96-480 tests
72225	ELAVIA™ Ac-Ab-Ak II.....	96 tests
72263	ELAVIA™ Ac-Ab-Ak I.....	96 tests
71120	GENETIC SYSTEMS™ HIV-1 Ag EIA.....	192 tests
71121	GENETIC SYSTEMS™ HIV-1 Ag Confirmatory.....	25 tests
72346-72348	Monolisa™ HBs Ag ULTRA.....	96-480 tests
72408	Monolisa™ HBs Ag ULTRA Confirmatory.....	25 tests
72566	Monolisa™ Anti-HBs PLUS.....	96 tests
72315-72316	Monolisa™ Anti-HBc PLUS.....	96-480 tests
72382	Monolisa™ Anti-HBc IgM PLUS.....	96 tests
72396	Monolisa™ HBe Ag-Ab PLUS.....	96 tests
72556-72558	Monolisa™ HCV Ag-Ab ULTRA.....	96-480 tests
72317-72318	Monolisa™ Anti-HCV PLUS Version 2.....	96-480 tests
72481	Monolisa™ Total Anti-HAV PLUS.....	192 tests
72491	Monolisa™ HAV IgM PLUS.....	192 tests
56438	ETI-AB-DELTAK-2*.....	96 tests
56439	ETI-DELTAK-2*.....	96 tests
56440	ETI-DELTA-IGMK-2*.....	96 tests
72710	Platelia™ SARS Screen.....	96 tests
72682	Platelia™ HSV (1+2) IgG.....	96 tests
72683	Platelia™ HSV (1+2) IgM.....	96 tests
72684	Platelia™ VZV IgG.....	48 tests
72685	Platelia™ VZV IgM.....	48 tests
72686	Platelia™ Measles IgG.....	48 tests
72687	Platelia™ Measles IgM.....	48 tests
72688	Platelia™ Mumps IgG.....	48 tests
72689	Platelia™ Mumps IgM.....	48 tests
72741	Platelia™ Toxo IgG TMB.....	96 tests
72751	Platelia™ Toxo IgM TMB.....	96 tests
72737	Platelia™ Toxo IgA TMB.....	96 tests
72744	Platelia™ Toxo IgG AVIDITY.....	48 tests
72526-72528	Malaria EIA*.....	96-480 tests
72951	Platelia™ Lyme IgM.....	96 tests
72952	Platelia™ Lyme IgG.....	96 tests
72820	Platelia™ HSV1 IgG.....	96 tests
72821	Platelia™ HSV2 IgG.....	96 tests
72840	Platelia™ Toxo IgG.....	96 tests
72841	Platelia™ Toxo IgM.....	96 tests
72842	Platelia™ Toxo IgG AVIDITY.....	48 tests
72812	Platelia™ CMV IgG AVIDITY.....	48 tests
72810	Platelia™ CMV IgG.....	96 tests
72811	Platelia™ CMV IgM.....	96 tests

* Ask for availability in your country.

72822	Platelia™ HSV 1+2 IgM96 tests
72850	Platelia™ Rubella IgG96 tests
72851	Platelia™ Rubella IgM96 tests
72912	Platelia™ Rubella IgG TMB96 tests
72922	Platelia™ Rubella IgM TMB96 tests
72681	Platelia™ CMV IgM96 tests
72680	Platelia™ CMV IgG96 tests
62796	Platelia™ Aspergillus EIA96 tests
62799	Platelia™ Candida Ab-Ac-Ak96 tests
62798	Platelia™ Candida Ag96 tests
62767	Platelia™ Chlamydia IgG TMB96 tests
72780	Platelia™ Mycoplasma pneumoniae IgG96 tests
72781	Platelia™ Mycoplasma pneumoniae IgM96 tests
72937	Platelia™ EBV-VCA IgG96 tests
72936	Platelia™ EBV-VCA IgM96 tests
72938	Platelia™ EBV-EA-D IgG96 tests
72939	Platelia™ EB-NA-1 IgG96 tests
72513-72514	Syphilis TA96-480 tests
72518-72519	Syphilis EIA II96-480 tests
72520	Syphilis IgM EIA96 tests
72778	Platelia™ Helicobacter pylori96 tests
72830	Platelia™ Dengue NS1 Ag*96 tests
194-5307	% CDT TIA96 tests
FCCP200	Kallestad™ Anti-CCP96 tests
25040	Kallestad™ Anti-Sm96 tests
25041	Kallestad™ Anti-Sm/RNP96 tests
25042	Kallestad™ Anti-R0 (SS-A)96 tests
25043	Kallestad™ Anti-La (SS-B)96 tests
25044	Kallestad™ ENA Profile96 tests
25087	Kallestad™ Anti-TPO96 tests
25153	Kallestad™ Anti-GBM96 tests
31008	Kallestad™ Anti-dsDNA96 tests
31013	Kallestad™ Anti-Scl-7096 tests
31014	Kallestad™ Anti-Jo-196 tests
31018	Kallestad™ ANA Screen96 tests
31019	Kallestad™ Anti-Centromere96 tests
31020	Kallestad™ Anti-Histone96 tests
31021	Kallestad™ Anti-Mitochondrial96 tests
31022	Kallestad™ ENA Screen96 tests
31023	Kallestad™ Anti-PR-396 tests
31024	Kallestad™ Anti-MPO96 tests
31025	Kallestad™ Anti-Tg96 tests
96CE	EIA Anti-Centromere96 tests
96JO	EIA Anti-Jo-196 tests
96SC	EIA Anti-Scl-7096 tests
96SM	EIA Anti-Sm96 tests
96SR	EIA Anti-SmRNP96 tests
96SA	EIA Anti-SS-A96 tests
96SB	EIA Anti-SS-B96 tests
96EP	EIA ENA PLUS96 tests
96SS	EIA Anti-ssDNA96 tests
12A6	EIA ANA-6 profile96 tests
96AN	EIA ANA Screen96 tests
96DS	EIA Anti-dsDNA96 tests
425-2000	Anti-Cardiolipin IgG96 tests
425-2020	Anti-Cardiolipin IgM96 tests
425-2040	Anti-Cardiolipin IgA96 tests
425-2060	Anti-β2GPI IgG96 tests
425-2080	Anti-β2GPI IgM96 tests
425-2100	Anti-β2GPI IgA96 tests
425-2120	Anti-Phosphatidylserine IgG96 tests
425-2140	Anti-Phosphatidylserine IgM96 tests
425-2160	Anti-Phosphatidylserine IgA96 tests
355-1180	Platelia™ Rabies II	192 tests

* Ask for availability in your country.

Instrumentation

Through innovative products and cost-effective solutions for clinical diagnostics, Bio-Rad provides laboratories with the essential tools for microplate processing: readers, washers, incubators, specimen/reagent dispensers and fully-automated systems. Automated systems for immunoblot assays are also available.

All Bio-Rad instruments have been designed to perform the most demanding protocols and meet the highest safety standards.

Automated Microplate Processing

EVOLIS™ Family Systems

The EVOLIS™ Family Systems are self-contained microplate processors design to completely automate microtiter plate based EIA techniques. These systems are dedicated to smooth and safe handling of materials encountered in today's busy labs, such as central hospitals, screening institutions, public health laboratories and transfusion centers. Moreover, the open architecture, with its user-friendly soft- and hardware interfaces, enables laboratory managers to select microplate assays with analytical requirements appropriate to their laboratory's environment.

EVOLIS™ Family Systems are a state-of-the-art microplate processor with a high degree of analytical performance.



EVOLIS™ Twin Plus System

EVOLIS™ System

EVOLIS™ System

Fully Automated and Truly Open System

- Walkway (primary sample-in to result-out)
- Processes 4 full plates (U-bottom and flat-bottom) at a time (up to 7 microplates)
- Combination of assays (up to 12) on one microplate to optimize the throughput
- Easy programming of any EIA-based assay
- Continuous loading of reagents, samples and microplates, with positive identification
- Full bi-directional functionality
- Designed for 30,000 to 100,000 tests per year

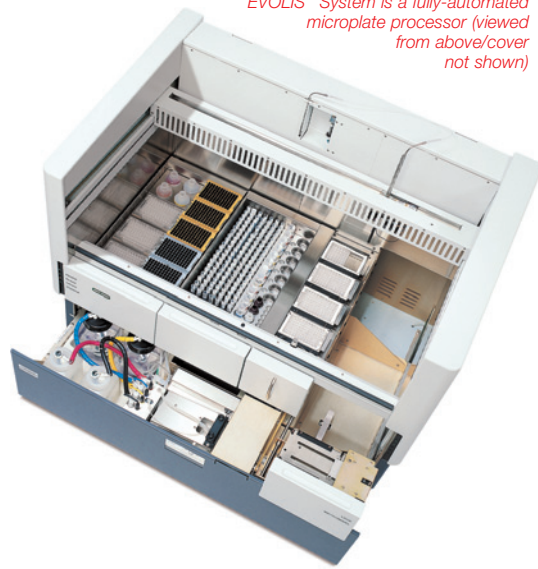
Highest Level of Safety

- A unique “triple-technology” detection system thanks to capacitive, air pressure & colorimetric pipetting monitoring
- Optimized and validated assay protocols provided for Bio-Rad assays
- Use of disposable tips to ensure zero carryover for the detection of samples and reagents
- Automatic checking of reagent batch compatibility and expiration date
- Real-time monitoring of all events and automatic inventory of all resources needed
- Pre-programmed maintenances and a self test function to ensure the safety of your routine
- Password protection and complete traceability

Highly Flexible

- Wide diversity of sample tubes accepted, on-board capacity for 180 primary sample tubes
- Direct use of kit bottles, from Bio-Rad and other suppliers
- Large choice of formats for sample pre-dilution: in-tip dilution, dilution in tubes, dilution in standard or deepwell plates (dilution capacity for 288 samples)
- Serum archive management, including aliquoting, sample data management, and freezer inventory (with Archiving Management Software™)
- 4 independent incubators (temperature controlled)
- 4 ambient incubators (light protected)
- 3 different wash buffers and 1 rinse bottle
- Bidirectional interfacing and networked multi EVOLIS™ Family configuration with the ability to centralize all results and to manage only one mono/bi-directional connection to the LIS

EVOLIS™ System is a fully-automated microplate processor (viewed from above/cover not shown)



Ordering Information

89700	EVOLIS™ System (includes EVOLIS™ analyzer, PC, monitor and printer)	1 system
89818	EVOLIS™ System (includes EVOLIS™ analyzer, PC)	1 system
97230	Support Table	1 unit
89611	Conductive Tips (300 µl) (samples)	18 x 960
89612	Conductive Tips (1,100 µl) (reagents)	10 x 960

To order or for more information, contact your local Bio-Rad office listed on the back cover.

EVOLIS™ Twin Plus System

Fully Automated and Truly Open System

- Walkway (primary sample-in to result-out)
- Scheduling of up to 3 full plates (U-bottom and flat bottom) at a time
- Combination of assays (up to 12) on one microplate to optimize the throughput
- Easy programming of any EIA-based assay
- Continuous loading of reagents, samples and microplates, with positive identification
- Full bi-directional functionality
- Designed for 10,000 to 50,000 tests per year

Highest Level of Safety

- A unique “triple-technology” detection system thanks to capacitive, air pressure & colorimetric pipetting monitoring
- Optimized and validated assay protocols provided for Bio-Rad assays
- Use of disposable tips to ensure zero carryover for the detection of samples and reagents
- Automatic checking of reagent batch compatibility and expiration date
- Real-time monitoring of all events and automatic inventory of all resources needed
- Pre-programmed maintenances and a self test function to ensure the safety of your routine
- Password protection and complete traceability



EVOLIS™ Twin Plus System

Highly Flexible

- Compact design with an integrated PC and Touchscreen
- Wide diversity of sample tubes accepted, on-board capacity for 144 primary sample tubes
- Direct use of kit bottles, from Bio-Rad and other suppliers
- Large choice of formats for sample pre-dilution: in-tip dilution in tubes, using standard or deepwell plates (dilution capacity 192 samples)
- Serum archive management, including aliquoting, sample data management, and freezer inventory (with Archiving Management Software™)
- 2 independent incubators (temperature controlled)
- 3 ambient incubators (light protected)
- 2 different wash buffers and 1 rinse bottle
- Bidirectional interfacing and networked multi EVOLIS™ Family configuration with the ability to centralize all results and to manage only one mono/bi-directional connection to the LIS

Ordering Information

93500	EVOLIS™ Twin Plus System (includes EVOLIS™ Twin Plus analyzer & Accessory Box)	1 system
89611	Conductive Tips (300 µl) (samples).....	18 x 960
89612	Conductive Tips (1,100 µl) (reagents)	10 x 960

Metrology Tools

The incubator verification tool, the plate transport module check, the performance evaluation kit and the reader verification plate tool ensure conformity to original manufacturer conditions and specifications, guarantee reliable operation and meet the highest accreditation requirements.



Incubator Verification Tool

Incubator Verification Tool

The Incubator Verification Tool allows EVOLIS™ Family Systems/Elite™ System/IPS System technicians and users to verify that the actual incubation temperature over a defined period of time is in accordance with the specified requirements.

Ordering Information

91052 Incubator Verification Tool1 kit

PE Kit, Pipettor-Washer

The PE kit, Pipettor-Washer allows the verification of EVOLIS™ Family Systems/Elite™ System pipetting and washing performance using a colorimetric method.

This kit is designed to fulfill verification requirement at installation and at regular interval. Bar coded reagents are ready to use, with preprogrammed protocols and automated interpretation.



PE Kit, Pipettor-Washer

Ordering Information

89894 PE kit, Pipettor-Washer1 kit



Reader Verification Plate

Reader Verification Plate

The Reader Verification Plate allows EVOLIS™ Family Systems/Elite™ System technicians and users to verify that the actual photometer is in accordance with the specified requirements (alignment, accuracy, linearity...).

Ordering Information

89690 Reader Verification Plate1 unit

High Volume Automated Microplate Processing

Elite™ System

A High Volume, High Performance Microplate System

The Elite™ microplate workstation is the first high volume fully automated system that increases flexibility and productivity while meeting the safety requirements of today's laboratory. Elite delivers a new level of microplate organization to meet the challenge.



Elite™ System

Highly Flexible

- Streamlines the laboratory workflow with the ability to link multiple Elite™ units, multiple EVOLIS™ analysers
- Flexible sample deck layout to meet laboratory organization
- Interfaces QC OnCall™, Unity Real-Time™ and Unity™ Desktop softwares to provide high-quality run validation with comprehensive audit trails
- Intuitive and easy-to-use software
- Reactive samples tracking and automatic worklisting
- Automatic export of validated results to LIS

Productivity

- Automation of each step to reduce operator intervention
- Truly walkaway system
- Parallel sample pipetting
- Plate stacker with up to 40 plates
- On board capacity for up to 900 samples at a time
- Continuous loading of samples/reagents/consumables

Highest level of Safety

- Unique triple liquid level detection
 - Capacitive
 - Barometric
 - Colorimetric
- Continuous pressure monitoring of both aspiration and distribution
- Positive identification of all loaded items
- Traceability from pipetting stage to LIS transfer
- Bio-Rad pre-set assay protocols

Ordering Information

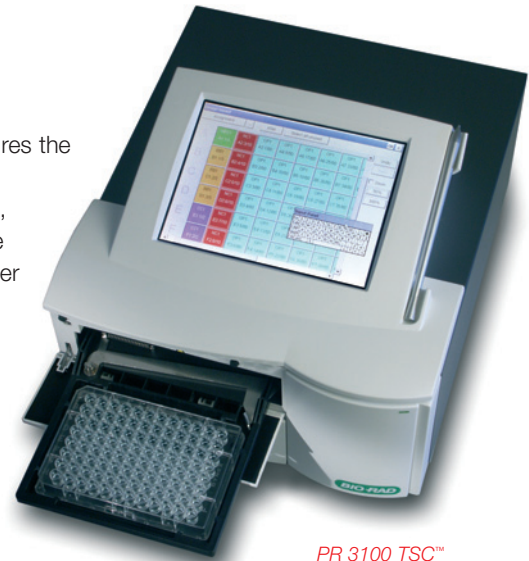
To learn more about the Elite™ System, please contact your Bio-Rad local representative.

Microplate Reader

PR 3100 TSC™ Absorbance Microplate Reader

The PR 3100 TSC™ is a compact microplate reader which measures the absorbance of specimens in 96-well plates.

Included in the configuration are five pre-installed filters (405, 450, 492, 550, 620 nm) and pre-programmed assays for the complete range of Bio-Rad EIA kits. The broad colored touchscreen together with a wizard interface offer comprehensive data reduction with a streamlined operation for all assays.



PR 3100 TSC™
Microplate Reader

Ordering Information

93200	PR 3100 TSC™ Microplate Reader includes 405, 450, 550, 492, 620 nm filters, 6 filters slide, USB key with Bio-Rad pre-programmed methods (APF) with manual, deskjet printer, printer cable, RS-232 cable, power cable, spare fuses, English printed user manual, multi-language user manuals CD-Rom1 unit
-------	---

Washer



PW 41 Microplate Washer

PW 40 and PW 41 Microplate Washers

PW 40 and PW 41 are powerful, compact and programmable 8-channel and 2 x 8-channel microplate washers/aspirators, with built-in vacuum and dispensing pumps. They have been designed for use with 96-well flat, U- or V-bottom plates. Dispense and aspirate head heights are user-adjustable, with vertical and horizontal needle positioning in the well (0.1 mm accuracy). Liquid level detectors on wash and waste bottles and vacuum sensing allow consistent wash/aspiration processes.

- Fully/easily programmable
- Large choice of washing methods which can be combined for the most complex washing sequences. Connection of up to three different wash solutions
- User-guided washer operation and programming via two-line liquid crystal display showing current system status
- Menu selection and detailed instructions entered with a simple-to-use keypad
- Simple daily maintenance, easy decontamination
- Aerosol cover protects the user and work area

Ordering Information

85508	PW 41 2 x 8-Channel Manifold Microplate Washer (includes bottles and tubing set, user maintenance kit and instruction manual).....	1 unit
85499	PW 40 8-Channel Manifold Microplate Washer (includes bottles and tubing set, user maintenance kit and instruction manual).....	1 unit

Accessories and Consumables

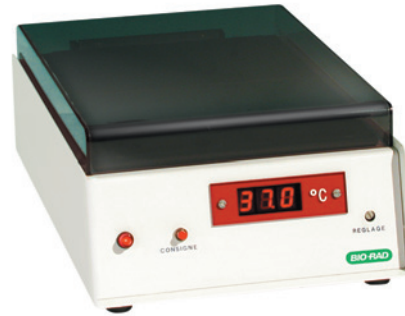
87055	PW 41 Optional 2 x 12-port Manifold	1 unit
87057	PW 41 Optional 3 x 8-port Manifold	1 unit
87040	PW 40/41 Optional 12-port Manifold	1 unit

Incubator

IPS Microplate Incubator

Dry incubator for microplates, designed for delivering a controlled temperature environment for optimal results with the most demanding assays.

- Edge effects eliminated by an excellent temperature gradation control and a plastic cover that prevents evaporation and environment influence
- Compatible with any type of microplate
- No water, no cleaning
- Temperature regulated $\pm 0.5^{\circ}\text{C}$
- Incubates up to four microplates simultaneously



IPS Microplate Incubator

Ordering Information

87530 IPS Microplate Incubator1 unit



Automated Strip Processor

Automated Strip Processor

This compact, easy-to-use instrument features pipetting robotics that handle each step of strip assay protocols. Simply load patient specimens, select a pre-programmed or custom protocol and the instrument does the rest.

- Eliminates technique-dependent variability
- Easy-to-operate, with true walkaway automation
- Small footprint
- Programmable for use with all Western Blot and strip immunoassay procedures

Ordering Information

91600 Autoblot 3000 Strip Processor includes bottles and tubing set; 20-well Tray (3-pack); and instruction manual1 unit

Accessories and Consumables

91601 Tray, 20-well, Autoblot25 pieces
 91602 Pump Tubing Kit, Autoblot1 unit
 91610 Bottle, 500 ml, Wash with Lid, Autoblot1 unit
 91603 Bottle, 250 ml, Water with Lid, Autoblot1 unit
 91636 Bottle, 1,000 ml, Waste with Lid, Autoblot1 unit

NOTES

A series of horizontal dotted lines for taking notes, spanning the width of the page.

NOTES

A series of horizontal dotted lines for taking notes, spanning the width of the page.

NOTES

A series of horizontal dotted lines for taking notes.





**Bio-Rad
Laboratories**

**For further information, contact the Bio-Rad office nearest
you or visit our website at www.bio-rad.com/diagnostics**

*Clinical
Diagnostics Group*

Website www.bio-rad.com/diagnostics **U.S.** 1-800-2BIO-RAD **Australia** 61-2-9914-2800 **Austria** 43-1-877-8901 **Belgium** 32-9-385-5511 **Brazil** 5521-3237-9400
Canada 1-514-334-4372 **China** 86-21-64260808 **Czech Republic** 420-241-430-532 **Denmark** +45-4452-1000 **Finland** 358-9-804-22-00 **France** 33-1-47-95-60-00
Germany +49-(0)89-318-840 **Greece** 30-210-7774396 **Hong Kong** 852-2789-3300 **Hungary** 36-1-455-8800 **India** 91-124-4029300 **Israel** 972-3-9636050
Italy +39-02-216091 **Japan** 81-3-6361-6902 **Korea** 82-2-3473-4460 **Mexico** +52(55)5488-7670 **The Netherlands** +31-318-540666 **New Zealand** 64-9-415-2280
Norway 47-23-38-41-30 **Poland** 48-22-3319999 **Portugal** 351-21-472-7700 **Russia** 7-495-721-14-04 **Singapore** 65-6415-3188 **South Africa** 27-11-442-85-08
Spain 34-91-590-5200 **Sweden** 46-8-555-127-00 **Switzerland** 41-61-717-95-55 **Thailand** 662-651-8311 **United Kingdom** +44-(0)20-8328-2000